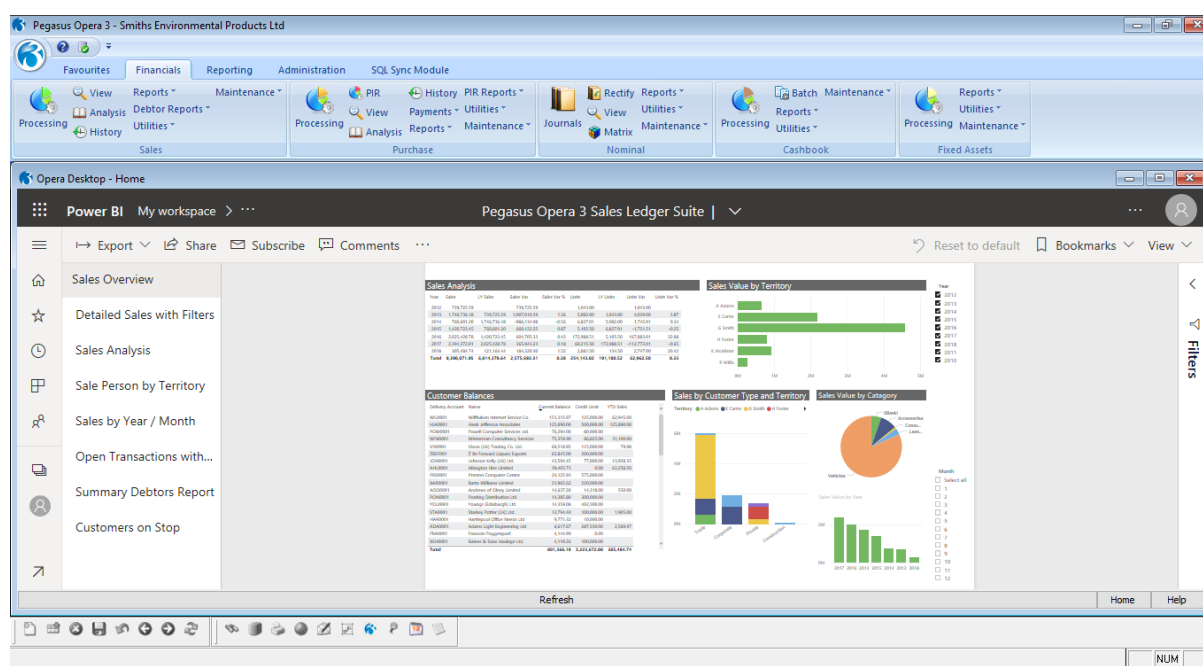


Microsoft Power BI Data Dictionaries and Opera 3 Report Packs

To provide Business Intelligence in Opera 3, on your desktop and on the road on Android and Apple devices and Windows tables & laptops.

To maximise the benefits of Power BI*, data dictionaries have been created for easy access to meaningful data for users. Included in these are pre-written report packs.

(These must be used in conjunction with the Profile Microsoft Power BI Link)



The data dictionaries/report packs are available for the eight core Opera 3 modules and can be purchased individually or as suites.

Financials

- Nominal Ledger
- Sales Ledger
- Purchase Ledger
- Cashbook

Supply Chain Management

- Sales Order Processing
- Purchase Order Processing
- Stock
- Bill of Materials

Data Dictionaries & Report Packs

Nominal Ledger

Nominal Data Tables

| | |
|-------|-----------------------------------|
| NACNT | Nominal Accounts |
| NPROJ | First Advanced Dimension |
| NJOB | Second Advanced Dimension |
| NBUDG | Nominal Budgets |
| NHIST | Nominal History including budgets |
| NCNTR | Nominal Cost Centres |
| NTYPE | Nominal Types |
| NSUBT | Nominal Sub Types |
| NTRAN | Nominal Transactions |

Nominal Supplied Reports

- 1) Summary Trial Balance
- 2) Summary History with Budgets
- 3) YTD Sales vs Budget Bar Chart

Sales Ledger

Sales Ledger Required Tables

| | |
|--------|---|
| HSANAL | Sales Analysis History |
| SANAL | Current Month Sales Analysis |
| SNAME | Customer Accounts |
| STERMS | Customer Terms |
| SPRFLS | Customer Profiles |
| SREASN | Sales Hold Reasons |
| STRAN | Sales Transactions |
| SLOOK | Sales Lookup Table (Region/Territory/Type etc.) |
| SSALE | Sales Analysis Codes |

Stock Required Tables

| | |
|-------|------------------|
| CNAME | Stock Items |
| CFACT | Stock Profiles |
| CCATG | Stock Categories |

Nominal Required Tables

| | |
|-------|---------------------------|
| NACNT | Nominal Accounts |
| NPROJ | First Advanced Dimension |
| NJOB | Second Advanced Dimension |
| NCNTR | Nominal Cost Centres |
| NTYPE | Nominal Types |
| NSUBT | Nominal Sub Types |

Sales Ledger Supplier Reports

- 1) Sales Overview page with multiples lists and charts
- 2) Detailed Sales Listing with Filters
- 3) Grid of Salesperson by Territory
- 4) Sales Analysis Charts
- 5) Grid of Sales by year and month
- 6) Open SL Transactions with Aging and Account Filter
- 7) Summary Debtors Report with drill down to document numbers.
- 8) Customers on Stop

Purchase Ledger

Purchase Ledger required Fields

| | |
|--------|---------------------------------------|
| HPANAL | Purchase Analysis History |
| PANAL | Current Month Purchase Analysis |
| PNAME | Supplier Accounts |
| PTERMS | Supplier Terms |
| PPRFLS | Supplier Profiles |
| PREASN | Purchase Hold Reasons |
| PTRAN | Purchase Transactions |
| PLOOK | Purchase Lookup Table (Supplier Type) |
| PPURCH | Purchase Analysis Codes |

Nominal Required Tables

| | |
|--------|---------------------------|
| NACNT | Nominal Accounts |
| NPROJ | First Advanced Dimension |
| NJOB | Second Advanced Dimension |
| NCNTR | Nominal Cost Centres |
| NTYPRE | Nominal Types |
| NSUBT | Nominal Sub Types |

Purchase Ledger Supplied Reports

- 1) Purchase Ledger Summary Dashboard
- 2) Outstanding PL Transactions
- 3) Purchase Analysis Grid

Purchase Order Processing

Purchase Order Processing Tables

| | |
|--------|-----------------------|
| PHEAD | Purchase Order Header |
| PIITEM | Purchase Order Lines |

Purchase Ledger Required Tables

| | |
|--------|---------------------------------------|
| PNAME | Supplier Accounts |
| PLOOK | Purchase Lookup Table (Supplier Type) |
| PPURCH | Purchase Analysis Codes |

Nominal Required Tables

| | |
|-------|---------------------------|
| NACNT | Nominal Accounts |
| NPROJ | First Advanced Dimension |
| NJOB | Second Advanced Dimension |
| NCNTR | Nominal Cost Centres |
| NTYPE | Nominal Types |
| NSUBT | Nominal Sub Types |

Stock Required Tables

| | |
|-------|------------------|
| CNAME | Stock Items |
| CFACT | Stock Profiles |
| CCATG | Stock Categories |

Purchase Order Processing Supplied Reports

- 1) Outstanding Orders
- 2) Un-invoiced Deliveries
- 3) Completed (Delivered and Invoiced) Orders
- 4) Undelivered but Invoiced Orders.

Sales Order Processing (SOP)

SOP Required Tables

| | |
|-------|---|
| IHEAD | SOP / Invoice / Delivery / Order Headers etc. |
| ITRAN | SOP / Invoice / Delivery / Order Lines etc. |
| CCATG | Stock Categories |

Sales Ledger Required Tables

| | |
|--------|---|
| HSANAL | Sales Analysis History |
| SANAL | Current Month Sales Analysis |
| SNAME | Customer Accounts |
| STERMS | Customer Terms Fully reengineered using SQL to hide the use of Custom Terms Profiles |
| SPRFLS | Customer Profiles Fully reengineered using SQL to hide the use of Custom Customer Profiles |
| SREASN | Sales Hold Reasons |
| STRAN | Sales Transactions |
| SLOOK | Sales Lookup Table (Region/Territory/Type etc.) |
| SSALE | Sales Analysis Codes |

Stock Required Tables

| | |
|-------|------------------|
| CNAME | Stock Items |
| CFACT | Stock Profiles |
| CCATG | Stock Categories |

Nominal Required Tables

| | |
|-------|---------------------------|
| NACNT | Nominal Accounts |
| NPROJ | First Advanced Dimension |
| NJOB | Second Advanced Dimension |
| NCNTR | Nominal Cost Centres |
| NTYPE | Nominal Types |
| NSUBT | Nominal Sub Types |

SOP Supplied Reports

- 1) Quotations with Quotation Number and Account Filters
- 2) Pro-forma Invoices
- 3) Outstanding Sales Orders
- 4) Un-invoiced Delivery Notes
- 5) Delivery Note Listing for general enquiries with a selection of filters
- 6) Invoice Listing for general enquiries with a selection of filters
- 7) Credit Notes
- 8) Documents

Cashbook

Cashbook Required Tables

| | |
|--------|---|
| AENTRY | Cashbook Reconcilable Entry |
| ATRAN | Cashbook Transactions Single and Batch Cashbook transactions that make up each Cashbook Entry. |

Nominal Required Tables

| | |
|-------|---------------------------|
| NACNT | Nominal Accounts |
| NPROJ | First Advanced Dimension |
| NJOB | Second Advanced Dimension |
| NCNTR | Nominal Cost Centres |
| NTYPE | Nominal Types |
| NSUBT | Nominal Sub Types |

Cashbook Supplied Reports

- 1) Unreconciled Transaction with Bank Account Selector
- 2) All Bank Transactions with a Bank Account Selector and Date Filter
- 3) Unreconciled Balances for all Bank Accounts
- 4) Bank Balances for all Bank Accounts

Stock

Stock Required Tables

| | |
|-------|---|
| CNAME | Stock Items Fully reengineered using SQL to hide the use of Stock Profiles |
| CFACT | Stock Profiles |
| CCATG | Stock Categories |
| CSTWH | Stock Balance per Warehouse Fully reengineered using SQL to hide the use of Stock Profiles |
| CTRAN | Stock Transactions Fully reengineered using SQL to hide the use of Stock Profiles |

Sales Ledger Required Tables

| | |
|-------|----------------------|
| SSALE | Sales Analysis Codes |
|-------|----------------------|

Purchase Ledger Required Tables

| | |
|--------|-----------------------|
| PPURCH | Supply Analysis Codes |
|--------|-----------------------|

Stock Supplier Reports

- 1) Stock Transaction Report by Transaction Type and Warehouse

BOM Module

BOM Required Tables

| | |
|--------|--------------------------|
| CSTRUC | Bill of Materials |
| CHEAD | Works Order Header |
| CLINE | Works Order Line Details |

Stock Required Tables

| | |
|-------|------------------|
| CNAME | Stock Items |
| CFACT | Stock Profiles |
| CCATG | Stock Categories |

BOM Reports Supplied

- 1) Open Works Orders
- 2) All Works Orders

Data Dictionary & Report Pack (each) - £250.00 + £50.00 AMC/Support

Data Dictionary & Report Pack Suites - £750.00 + £175.00 AMC/Support