

# KC Stock Manager

Advanced accounts integrated software solutions

**For use with**

**OPERA II**

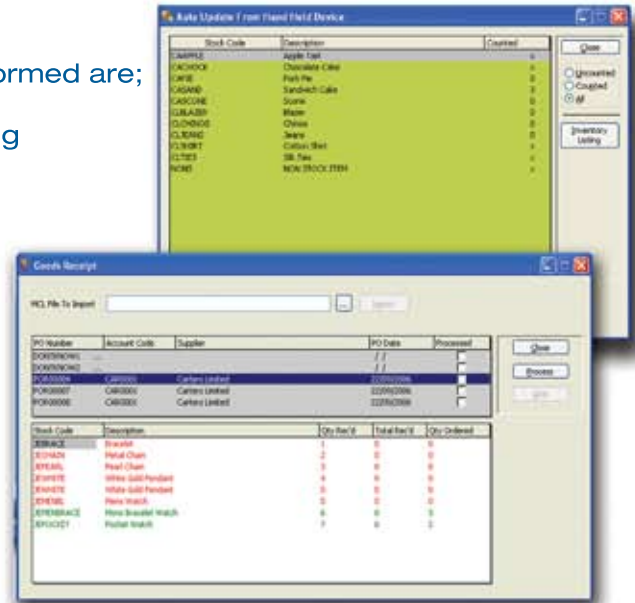


To further enhance the capabilities of Pegasus Opera II, Kamarin Computers have developed the KC Stock Manager module.

The KC Stock Manager provides users of Pegasus with the ability to manage their stock processes efficiently and accurately through the use of handheld barcode scanning devices.

Key stock functions that can be performed are;

- Perform stock takes – whilst allowing processing within the accounts system to continue unaffected
  - Raise purchase orders – operators can scan products on the shop / warehouse floor and enter required quantities for which a purchase order is created in Exchequer
  - Receive goods – users can record details of items and quantities received on the handheld terminal which will integrate with Exchequer and populate details of the GRN
  - Write off stock – provides users with the ability to post stock adjustments via the handheld into Pegasus. Ideal for stock held in conjunction with a use by or sell by date
  - Perform price audits – provides users with the ability to check shelf edge labels to prices currently shown in Pegasus Opera II
  - Move stock between locations details of items moved between locations can be recorded onto the handheld devices. Information is then posted as a stock adjustment into Pegasus Opera II
  - Print shelf edge labels – Configurable for each installation, shelf edge labels can be produced via the KC Stock Manager to display the appropriate bar code
- Users of the KC Stock Manager can operate the system in conjunction with the handheld terminals or simply via the application itself.
- With users of Opera II in mind, the KC Stock Manager can also function in a multiple location scenario. This allows users to keep an accurate central stock management record which can be remotely and easily updated from other locations or warehouses.



For more information on this or any other Kamarin solution, please don't hesitate to contact us using the following details:



Profile Technology Services Ltd  
9 Progression Centre  
Mark Road  
Hemel Hempstead  
Hertfordshire  
HP2 7DW

T: 08000 195 101  
F: 01442 236 337  
E: [info@profile.co.uk](mailto:info@profile.co.uk)  
W: [www.profile.co.uk/epos](http://www.profile.co.uk/epos)



**08000 195 101**  
[www.profile.co.uk/epos](http://www.profile.co.uk/epos)